

**Heatherglen Industrial Park**  
**Rocky View County, AB**  
3.53 acres



**SALE | LEASE | BUILD TO SUIT**



**Paved  
Roads**



**Limited Service  
Land**



**Quick Access to  
Glenmore & Stoney Trail**

**JON C. MOOK, SIOR**  
PRESIDENT, MANAGING DIRECTOR  
C: 403-616-5239  
jmook@lee-associates.com

**EMILY GOODMAN, B.COMM**  
VICE PRESIDENT, PRINCIPAL  
C: 403-862-4348  
egoodman@lee-associates.com





## KEY FEATURES

**PRICE:**

Market

**SITE SIZE:**

3.53 acres

**MUNICIPALITY:**

Rocky View County

**LEGAL:**

Plan 9810626, Block 11, Lot 11

**ZONING:**

DC-161

**SERVICES:**

- » Electric
- » Gas
- » Internet / Phone
- » Paved roads
- » Pressurized fire water system
- » Storm water management system

**PROPERTY TAXES:**

Approximately \$18,000 per annum

**LOCATION:**

Located off Glenmore Trail fronting on to 100th Street SE.

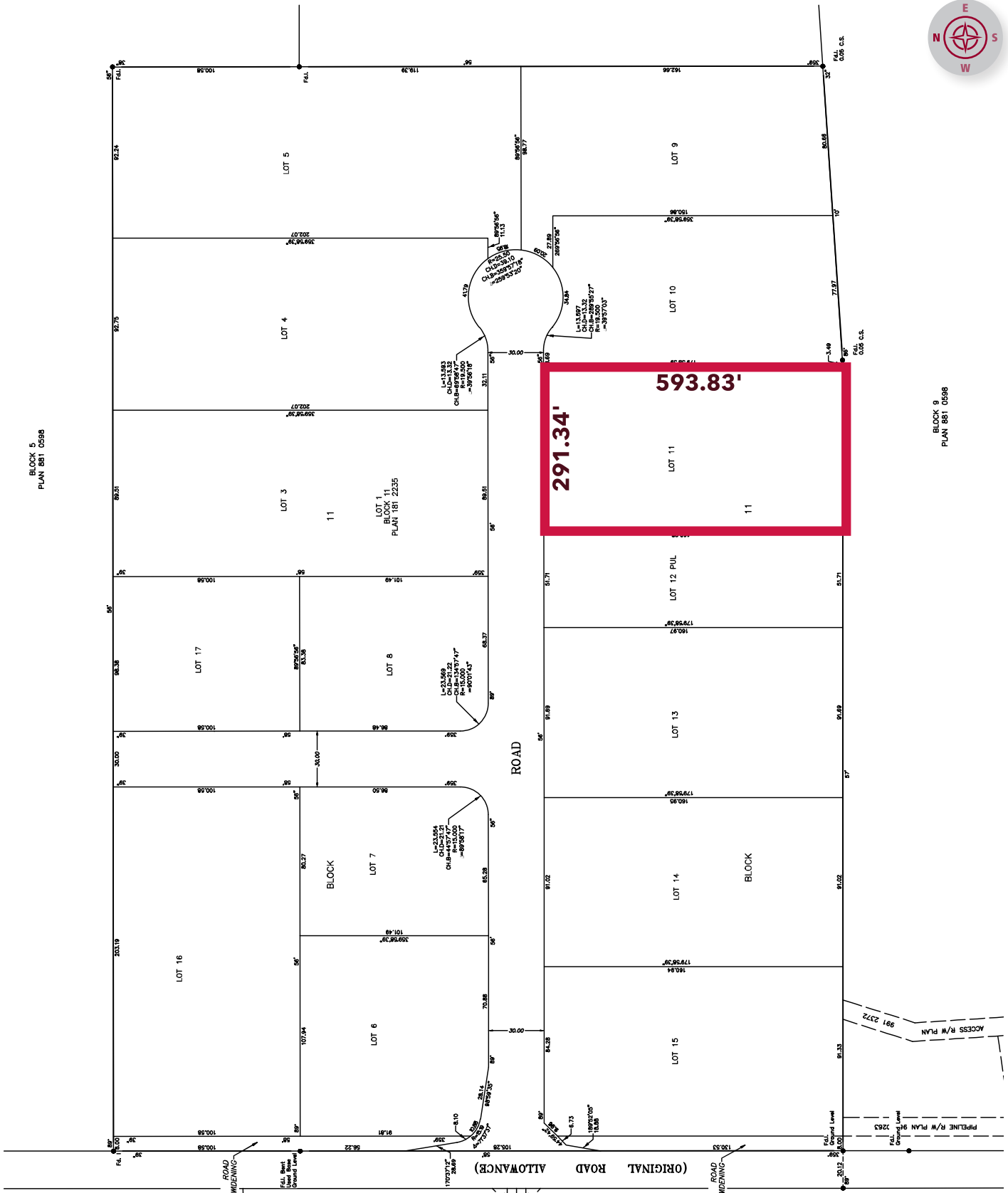


# PLAN OF SUBDIVISIONS



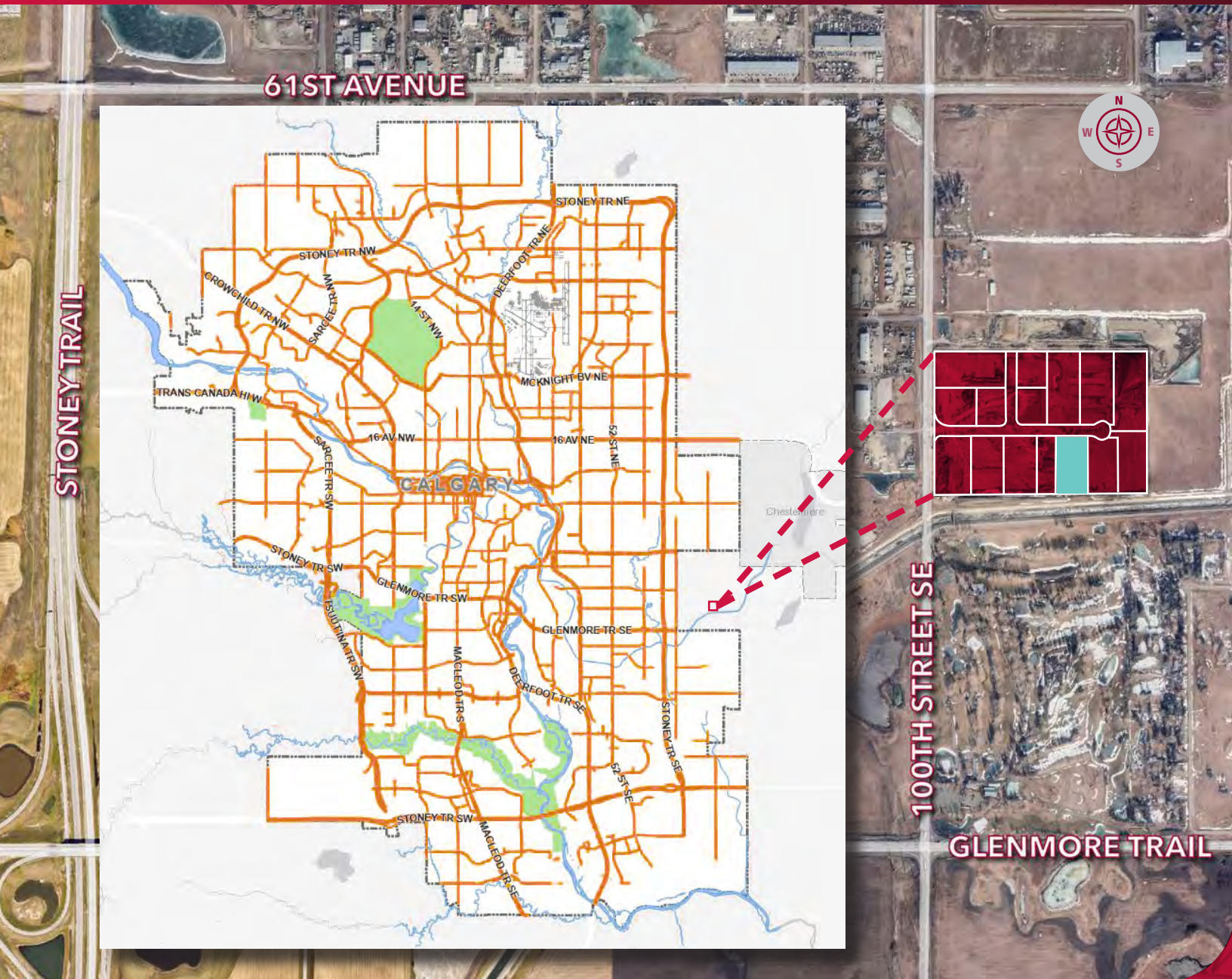
BLOCK 5  
PLAN 881 0598

BLOCK 8  
PLAN 881 0598





# LOCATION



## CONTACT US



**JON C. MOOK, SIOR**  
PRESIDENT, MANAGING DIRECTOR  
C: 403-616-5239  
jmook@lee-associates.com



**EMILY GOODMAN, B.COMM**  
VICE PRESIDENT, PRINCIPAL  
C: 403-862-4348  
egoodman@lee-associates.com



**LEE &  
ASSOCIATES**

117, 4950 - 106th Avenue SE | Calgary, AB T2C 5E9  
[lee-associates.com/calgary](http://lee-associates.com/calgary)

COMMERCIAL REAL ESTATE SERVICES